

A-7

G7

F-7

B7

E<sup>b</sup>Δ

GΔ

B<sup>b</sup>7

F-7

B<sup>b</sup>7

G-7 b9

C7

F

B<sup>b</sup>7 (wyr)

Bix Lix

A voicing

B.

F-7

B-7

F-7

C7

B<sup>b</sup>7

B. Harris  
 & arpeggios in inversions  
 \* playing scales three times

C7 CA7 C-7

licks

Dim scale drop semitone of 7ths

(B7) (D7) (F7) (A7)

(C)

or

F7

(C)

etc

Bb7

miles Bb7

BACH Lick

blues ending

Dim lick C7 b9

Dim lick C7 b9

CA7

Dim C7

RED GARLAND on all of you.

Handwritten musical notation on the left page, featuring a single staff with notes and various chords written below it.

Chords written below the staff include:

- $B^b7$
- $E^b$
- $G^-$
- $G^b0$
- $F^-$
- $B^b$
- $E^b$
- $D7+$
- $D^b7$
- $C7$
- $B\Delta$
- $B^b7$
- $F7$
- $B^b7$
- $E^b\Delta$
- $B^b7$
- $E^b$
- $G-7$
- $C7$
- $A^b\Delta$
- $A\emptyset$
- $D7^b$
- $G-7$
- $D^b7$
- $C7$
- $F-7$
- $F-7/B^b$
- $B^b7$
- $E^b\Delta$
- $F-7$

Handwritten musical notation on the right page, featuring a single staff with notes and various chords written above it.

Chords written above the staff include:

- $D-7$
- $G7$
- $C7$
- $D-7$
- $G7$
- $C7$

more horn-fucking licks

atonal lick

peeping lam

B<sup>b7</sup>

E-7<sup>b9</sup> A7 alt

D-7 G7 AH C#7

A<sup>b</sup> pent B<sup>b</sup> pent B pent

best is yet to come

G6 G#7 G#6 G# E7 ~~A-7~~ D7

G6 G#7 G6 E7

A#7 A-7 D7 G#7 C#-7 F#-7

B#7 B#7 G#7 C#-7 F#-7

B#7 B7 B6 B+ G#7

C#-7 F#-7 B#7 A<sup>b</sup>

C#-7 F#-7

G7 E7

A7 A- D A7

E-

D# D G 2 5

E 2 5

Handwritten musical notation on the left page, featuring several staves with notes and chords. The notation includes various accidentals (sharps, flats) and chord symbols (e.g., D-, G, C7, F7, A<sup>b</sup>, A<sup>b</sup>). The first staff shows a whole note chord, followed by a series of chords across subsequent staves. The notation is somewhat messy, with some corrections and scribbles.

Recipe for Love

Handwritten musical notation on the right page, titled "Recipe for Love". The notation includes various chords and notes, with some corrections and scribbles. The first staff shows a whole note chord, followed by a series of chords across subsequent staves. The notation is somewhat messy, with some corrections and scribbles.

B<sup>b</sup> trumpet TUESDAY, CHICKIE DAY

B<sup>b</sup>

Oct ↑ tenor trombone

b<sup>0</sup>

FΔ7 A<sup>b</sup>-7 B-7 EΔ GΔ7 B<sup>b</sup>/F D-

E<sup>b</sup>/P B<sup>b</sup> C<sup>b</sup> minor

B<sup>b</sup> trumpet

b<sup>0</sup> B<sup>b</sup> trombone b<sup>0</sup> (b flat)

sounds a tone down

bass trombone in F

Soprano b<sup>0</sup> (B<sup>b</sup>)

Saxophones

Alto E<sup>b</sup> sounds down major 6th

sounds down tone

b<sup>0</sup> B<sup>b</sup> tenor sounds down

sounds down octave plus major 6th

b<sup>0</sup> 9th E<sup>b</sup> baritone

b<sup>0</sup>

E<sup>b</sup> alto (A<sup>b</sup>) TUESDAY, CHICKIE DAY

Handwritten musical score for E<sup>b</sup> alto (A<sup>b</sup>) part of "Tuesday, Chickie Day". The score is written on ten staves. The first staff begins with a treble clef, a key signature of two flats (B-flat and E-flat), and a common time signature (C). The melody is written with eighth and sixteenth notes, often beamed together. The second staff contains a 7/4 time signature. The third staff contains a 7/4 time signature. The fourth staff contains a 7/4 time signature. The fifth staff contains a 7/4 time signature. The sixth staff contains a 7/4 time signature. The seventh staff contains a 7/4 time signature. The eighth staff contains a 7/4 time signature. The ninth staff contains a 7/4 time signature. The tenth staff contains a 7/4 time signature. The score includes various musical notations such as treble clef, key signature (two flats), common time (C), and various note values (eighth, sixteenth, quarter, half, whole). There are also some markings like "B" in a box, "3" in a circle, and an asterisk (\*).

B<sup>b</sup> tenor TUESDAY, CHICKIE DAY

Handwritten musical score for B<sup>b</sup> tenor part of "Tuesday, Chickie Day". The score is written on seven staves. The first staff begins with a treble clef, a key signature of two flats (B-flat and E-flat), and a common time signature (C). The melody is written with eighth and sixteenth notes, often beamed together. The second staff contains a 7/4 time signature. The third staff contains a 7/4 time signature. The fourth staff contains a 7/4 time signature. The fifth staff contains a 7/4 time signature. The sixth staff contains a 7/4 time signature. The seventh staff contains a 7/4 time signature. The score includes various musical notations such as treble clef, key signature (two flats), common time (C), and various note values (eighth, sixteenth, quarter, half, whole). There are also some markings like "B" in a box, "3" in a circle, and an asterisk (\*).

trombone B<sup>b</sup>

TUESDAY, CHICKIE DAY

Handwritten musical notation for Trombone B<sup>b</sup> part of 'Tuesday, Chickie Day'. The notation is written on a single staff in 4/4 time. It begins with a key signature of two flats (B<sup>b</sup> and E<sup>b</sup>) and a common time signature (C). The melody consists of eighth and quarter notes, with some measures containing rests. There are two boxed letters, 'B' and 'C', written above the staff. The notation ends with a double bar line.

PIANO

Handwritten musical notation for Piano part of 'Tuesday, Chickie Day'. The notation is written on a single staff in 4/4 time. It begins with a key signature of two flats (B<sup>b</sup> and E<sup>b</sup>) and a common time signature (C). The notation includes various chords and melodic lines, with some measures containing rests. There are several boxed letters, 'B' and 'C', written above the staff. The notation ends with a double bar line.



flute (GAT)

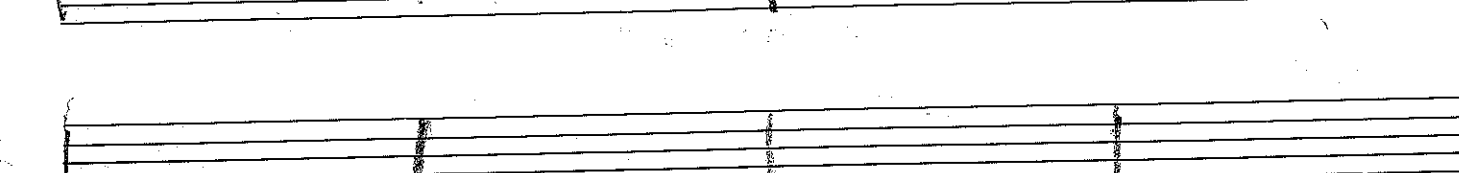
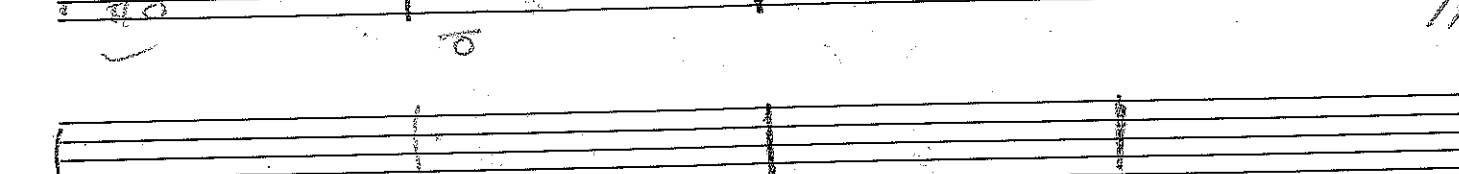
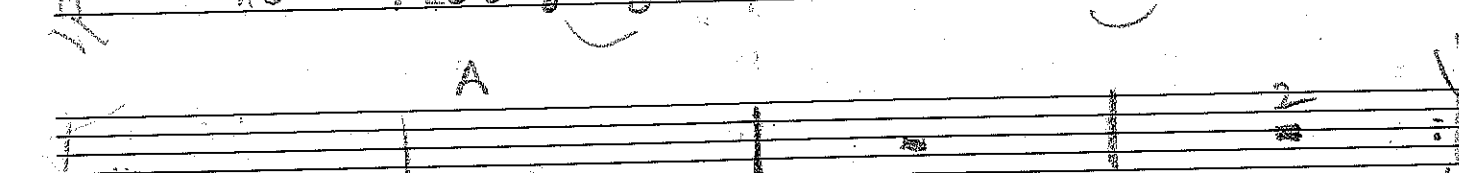
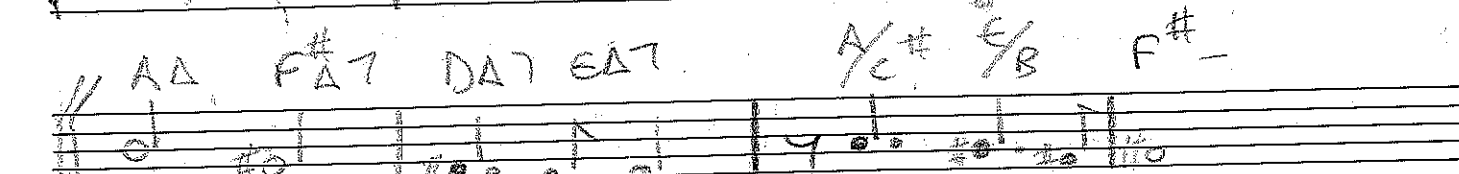
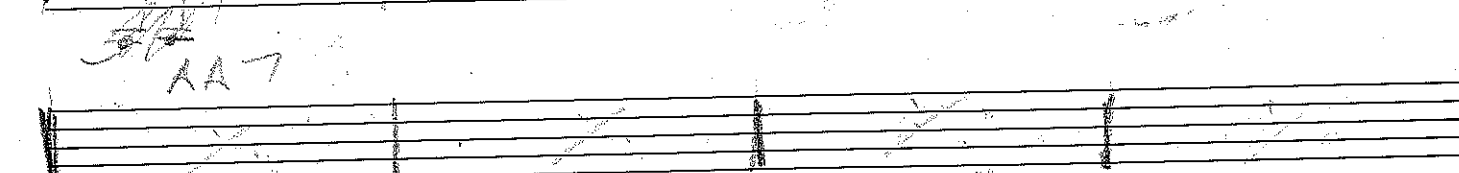
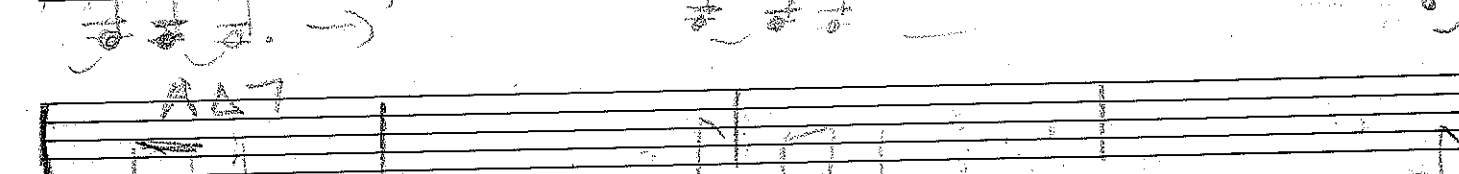
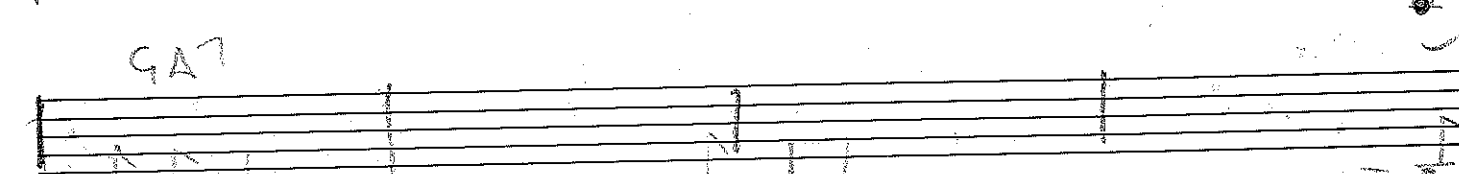
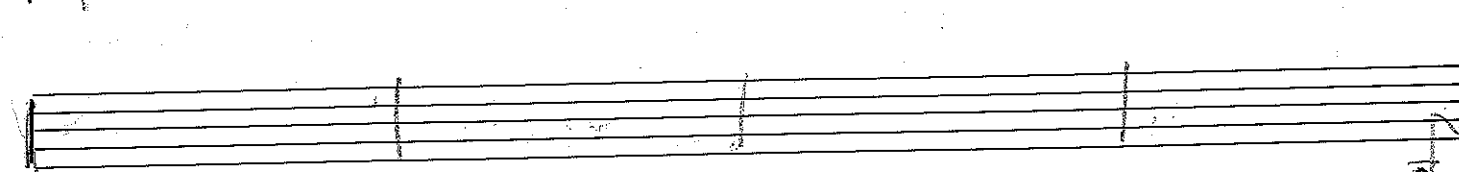
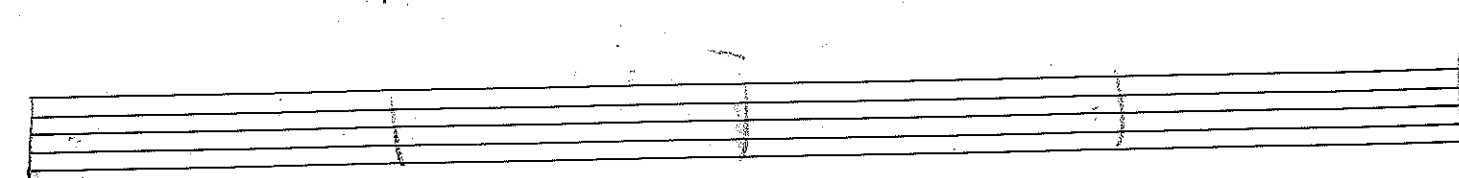
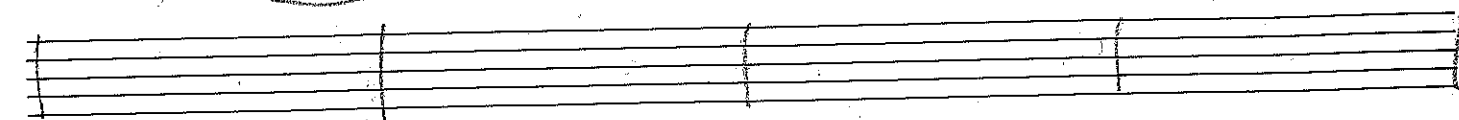
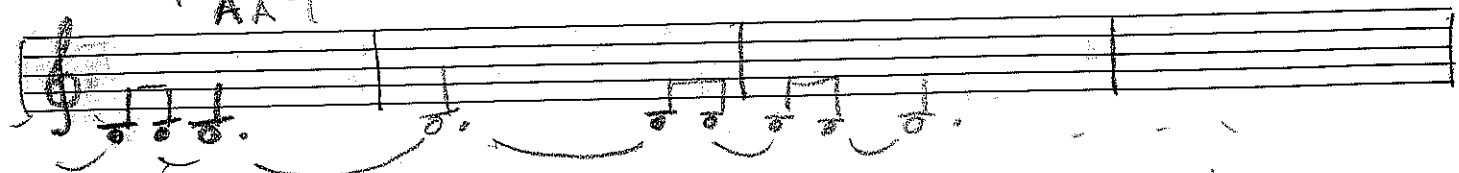
Handwritten musical notation for the flute part on the left page. It consists of six staves. The first four staves contain various melodic lines with notes, rests, and slurs. The fifth staff has a key signature change to one sharp (F#) and includes the label '(FAT)'. The sixth staff has a key signature change to two sharps (F# and C#) and includes the label '(GAT)'. The notation is dense with many notes and slurs, suggesting a complex melodic line.

Alto (E<sup>b</sup>)

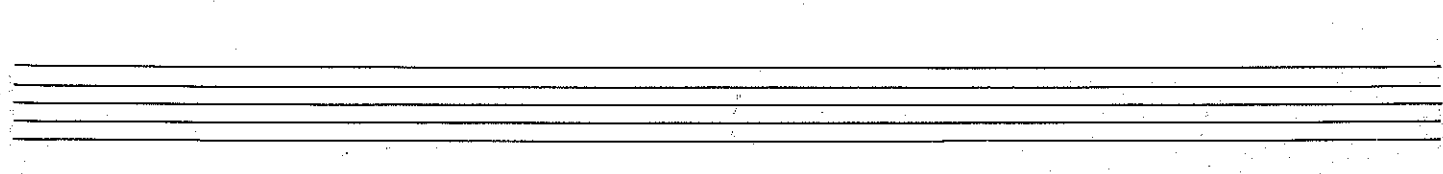
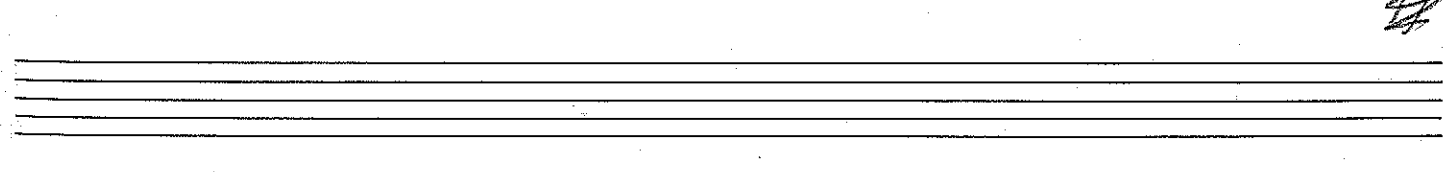
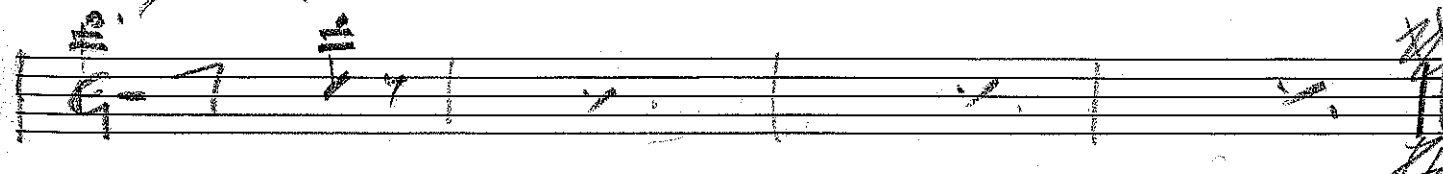
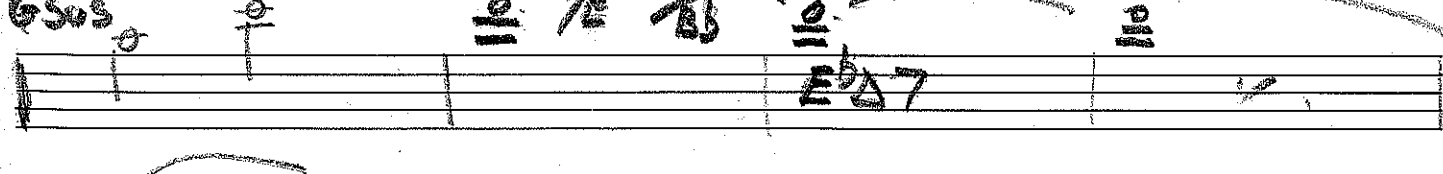
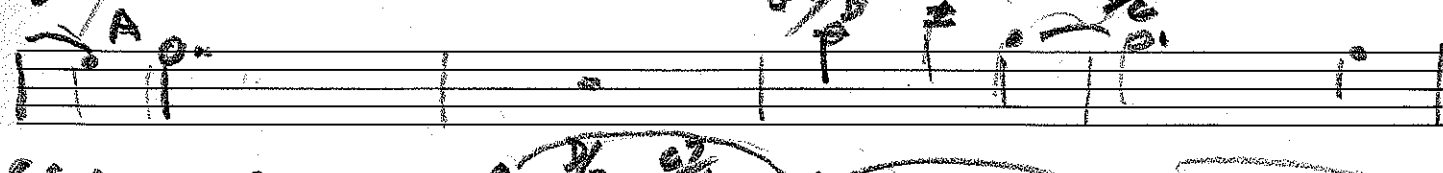
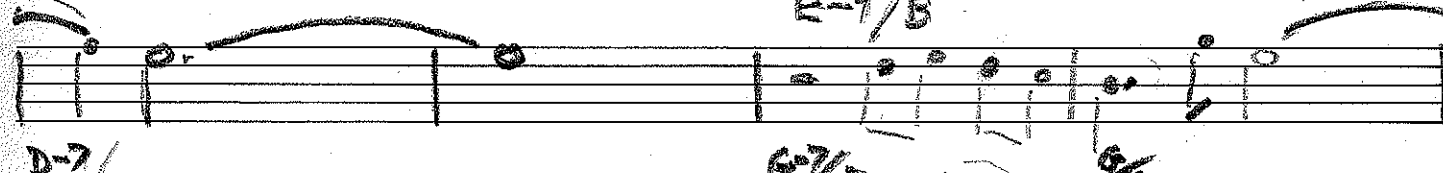
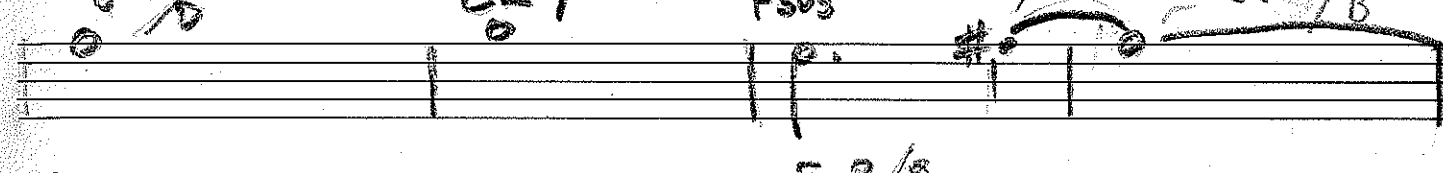
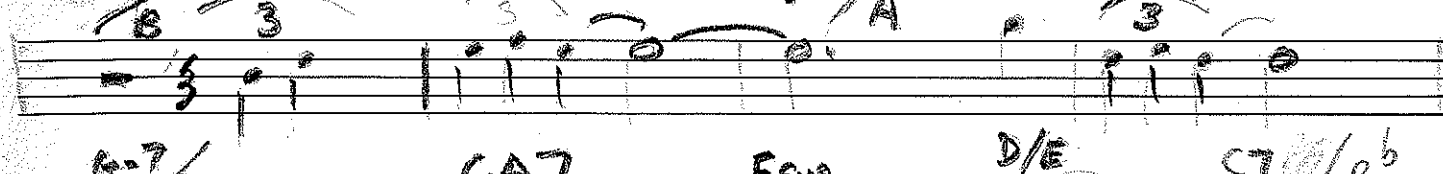
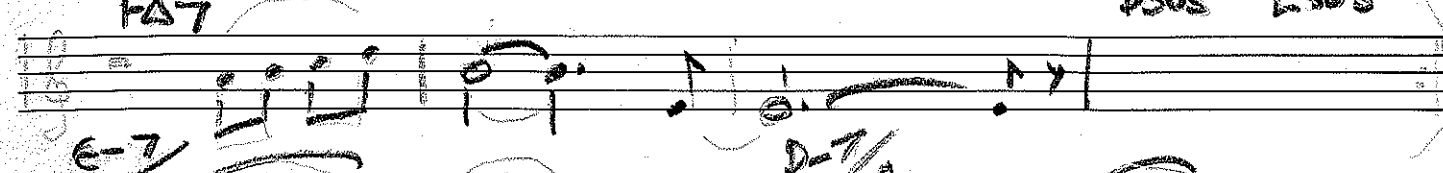
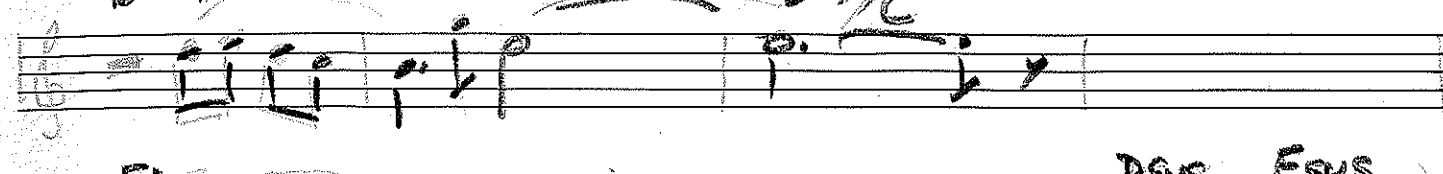
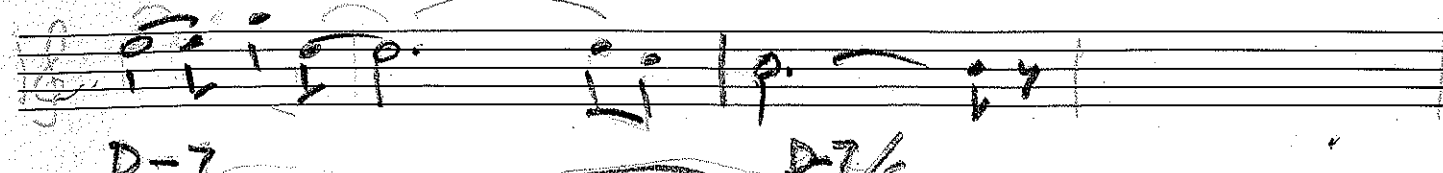
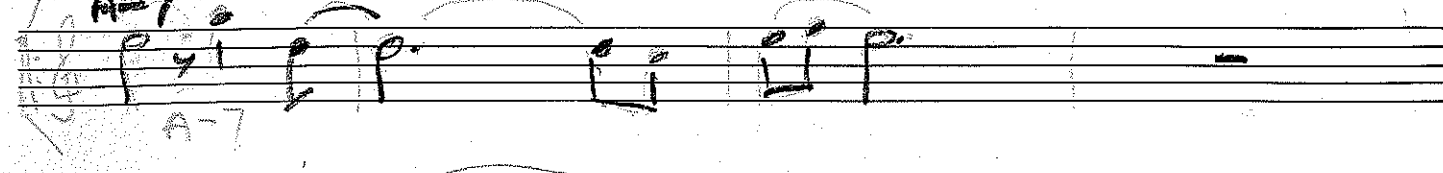
EΔ7.

Handwritten musical notation for the Alto part on the right page. It consists of six staves. The first four staves contain various melodic lines with notes, rests, and slurs. The fifth staff has a key signature change to one sharp (F#) and includes the label 'DΔ7'. The sixth staff has a key signature change to two sharps (F# and C#) and includes the label 'EΔ7'. The notation is dense with many notes and slurs, suggesting a complex melodic line.

Trumpet B<sup>b</sup>  
AA7

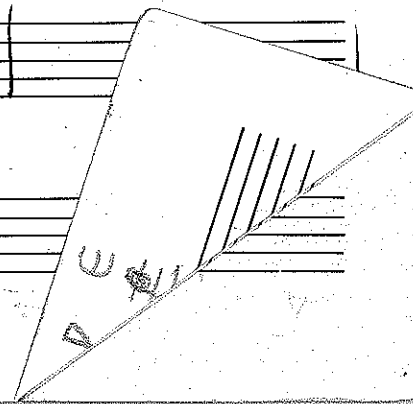


B<sup>b</sup> Trumpet here and Now  
A-7



Handwritten musical notation on the left page, featuring ten staves. The notation includes various notes, rests, and accidentals, with some staves containing additional handwritten annotations such as "CA7", "BA+5", "CA BA BA", "GA DA", "E/D", "BA+5", "B-", "B7/C#", and "B7/C#".

Handwritten musical notation on the right page, featuring ten staves. The notation includes various notes, rests, and accidentals, with some staves containing additional handwritten annotations such as "B-/F#", "B-/G#", "B7/C", "B-", "F#", "G-", "B7", and "B7/C#".



treble clef

G A B C D E

Handwritten musical notation on a treble clef staff. It shows a sequence of notes: G, A, B, C, D, E, F, G, A. Below the notes are the letters G, A, B, C, D, E, F, G, A. Above the notes are the letters G, A, B, C, D, E.

middle c

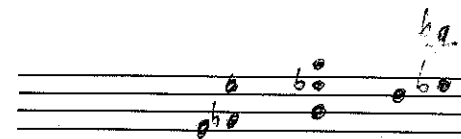
Handwritten musical notation on a treble clef staff. It shows a sequence of notes: G, A, B, C, D, E, F, G, A. Below the notes are the letters G, A, B, C, D, E, F, G, A. Above the notes are the letters G, A, B, C, D, E.

Handwritten musical notation on a treble clef staff. It shows a sequence of notes: G, A, B, C, D, E, F, G, A. Below the notes are the letters G, A, B, C, D, E, F, G, A. Above the notes are the letters G, A, B, C, D, E.

practise the 5 finger exercise hands together



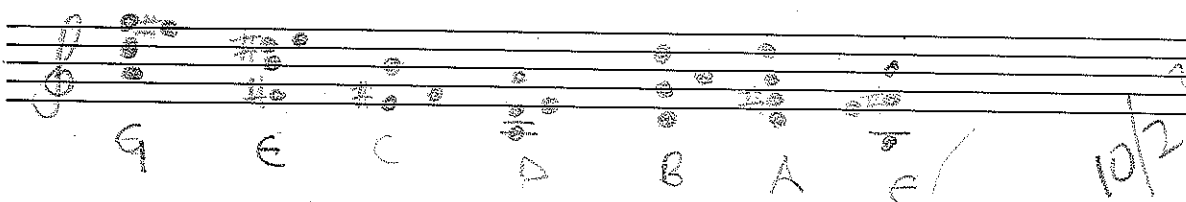
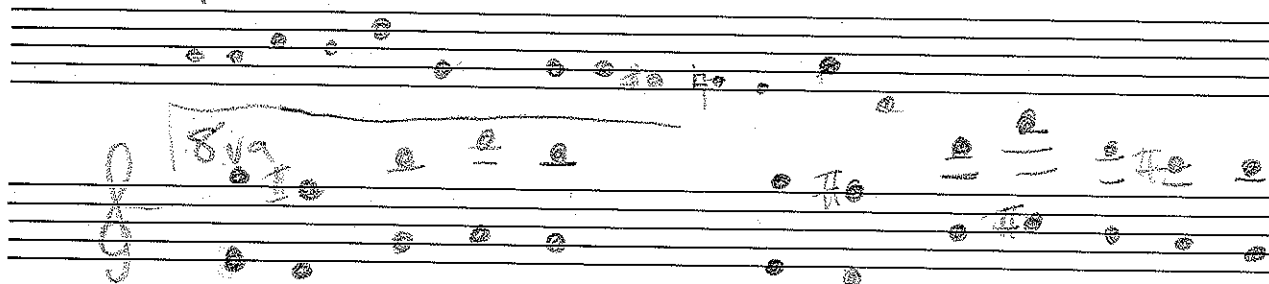
N  $F \frac{-}{B^b}$   $E \frac{s}{A^b}$   $A \frac{b}{C^\#}$   $D \frac{b}{B}$  B something  $\rightarrow D^b$



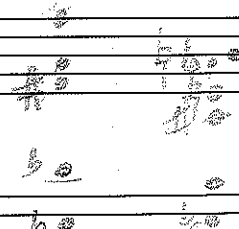
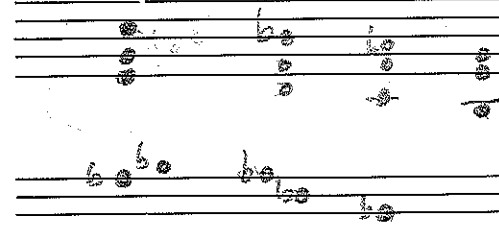
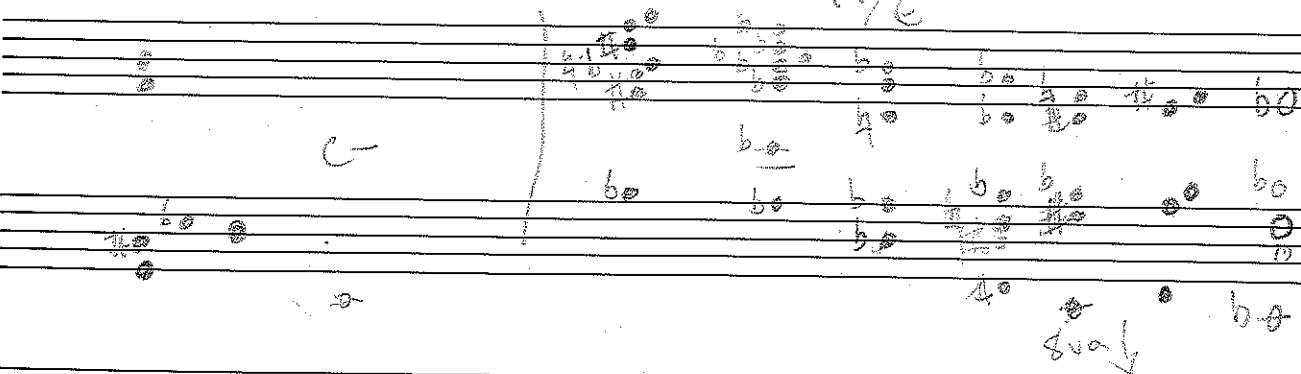
f



FΔ



scriabin minor 5  $\rightarrow$  1 ( $E^b/C$ )



20/3/92

$E \frac{-}{F}$   $B^b-$   $E^b 7$   $A^b \Delta$   $D^b \Delta 7$

$F-7$   $B^b 7$   $E^b sus$   $C^b 6$   $E^b/B$   $E^b/A^b$   $E^b 7$

$F \frac{-}{E^b}$   $E^b/G$   $D^b add 9$   $A^b/C \frac{-}{F}$   $A^b/B F^\# \Delta$

$F \frac{-}{E^b}$   $E^b/G$   $D^b add 9$   $A^b \Delta 7$   $E \frac{-}{G}$

$E \frac{-}{G}$   $D^b/A$  Cast line FΔ

$B^b \Delta 7$   $E \emptyset$   $B^b \Delta 7$   $E \emptyset$   $E \frac{-}{D}$   $B$

$F^\# \Delta 7$

B<sup>b</sup>A D- E<sup>b</sup> 9- A<sup>b</sup> F- A<sup>b</sup>-

Handwritten musical notation on the left page, including notes and chords. Chords written below the staff include: E<sup>b</sup>/B, D<sup>b</sup>/A, E<sup>b</sup>/B, D<sup>b</sup>/A, A<sup>b</sup>/G, B<sup>b</sup>/F, E<sup>b</sup>, D, A<sup>b</sup>Δ, D<sup>b</sup>/F, F, C<sup>b</sup>/A<sup>b</sup>, B<sup>b</sup>Δ, F<sup>#</sup>-D<sup>b</sup>Δ Fsus, B- A- F<sup>#</sup> BΔ A<sup>b</sup>- D<sup>b</sup>Δ A<sup>b</sup>- Δ<sup>b</sup>Δ, B<sup>b</sup>sus(43) A<sup>b</sup>sus3 FΔ Fsus43 E<sup>b</sup>sus43 CΔ.

Handwritten musical notation on the right page, including notes and chords. Chords written below the staff include: B<sup>b</sup>sus major 3rd, A<sup>b</sup>sus no 3rd, E<sup>b</sup>/A, C<sup>#</sup>-A, D<sup>b</sup>sus maj 3, E<sup>b</sup>/D, D<sup>b</sup>/C, A<sup>b</sup>Δ (no 3rd), A<sup>b</sup>-11, D<sup>b</sup>(b5), B<sup>b</sup>1, A<sup>b</sup>sus, E<sup>b</sup>/A, B<sup>b</sup>/F, C<sup>#</sup>-6 (b6), B<sup>b</sup>-6 (b6), E<sup>b</sup>Δ 9 (no 7), DΔ, D, B<sup>b</sup>Δ 7 #5, B-7, F<sup>#</sup>Δ 7, DΔ, B/A, A/G, G/F, F/E<sup>b</sup>, E<sup>b</sup>Δ 11 #5, F<sup>b</sup>/B, F<sup>b</sup>/B, F<sup>b</sup>/B, D.S. all.

1 2

REV MAT

E-7 CA9/E A-7 A7/4 D/F# G6 D/9

GAT<sup>b5</sup> A-7 D7 C

7:60

7:60

FREEZY DEAR

CA | A<sup>b</sup>A | FA | F- Gsus<sup>b9</sup>

Fsus<sup>b9</sup> DA CA E- E- B- C/B<sup>b</sup>

DA taste

3873178

G phryg B<sup>b</sup> phryg FA. ( )

F phryg A<sup>b</sup> phryg E<sup>b</sup>A ↑

connection



Handwritten musical notation on two staves. Above the first staff are notes:  $E^b$  wak,  $A^b$  -,  $F^\#$  -,  $F$ . Above the second staff are notes:  $E^b$  n,  $A^b$  -,  $B$  -,  $E$  phr,  $C^\#$  /  $F^\#$  /  $B$  /  $E$ .

Handwritten musical notation on two staves. Above the first staff is a bracket labeled "2nd" with notes  $A^b$  and  $A^b$ . Above the second staff are notes:  $E$  A 6,  $F$  sis,  $B$  alt,  $C$  A<sup>bs</sup>,  $B$  A<sup>bs</sup>, 2.

Handwritten musical notation on two staves. Above the first staff is a note  $m^b$ . Above the second staff is a note  $b$ .

Handwritten musical notation on two staves. Above the first staff is the word "taste". Above the second staff are notes:  $F^\#$ ,  $A$ ,  $C^\#$ ,  $D$ ,  $F$ .

Handwritten musical notation:  $D7/E$ ,  $A/D$ ,  $D/G$ ,  $E/F^\#$ ,  $D/E$ ,  $F A^\#$ ,  $G/C$ ,  $F A^\# E$ ,  $G/C$ ,  $:$ .

Handwritten musical notation:  $D7/G$ ,  $E7/F$ ,  $F7/B^\#$ ,  $E7/A^\#$ ,  $D$  sus,  $F$  /  $B^\#$ ,  $C$  add  $g/s$ .

Handwritten musical notation:  $F^\#$  wak,  $E$  wak,  $C/A$ ,  $E/D$ ,  $F^\# / D$ ,  $E/F$ ,  $B$  - sus.

Handwritten musical notation on four staves. The first staff has a box labeled "TWENTY". The notation includes various notes and accidentals across the staves.

Handwritten musical notation on two staves. Above the first staff are notes:  $F^\#$ ,  $E$  /  $A$ ,  $C^\#$ ,  $D$  9 no 3,  $F^\#$  wak,  $E$  wak,  $C$  A7,  $B$  /  $A$ ,  $E$  /  $B$ . Above the second staff are notes:  $F^\#$ ,  $A$ ,  $C^\#$ ,  $D$ ,  $F$ .

8/12/91

Lead for climb inside

Lead

9 phr.

Handwritten musical notation with chords: F#Δ, AΔ, EA, B/C, A6A, A6, A6.

Earth Ending

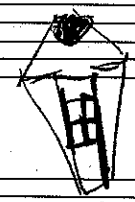
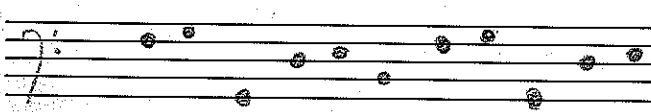
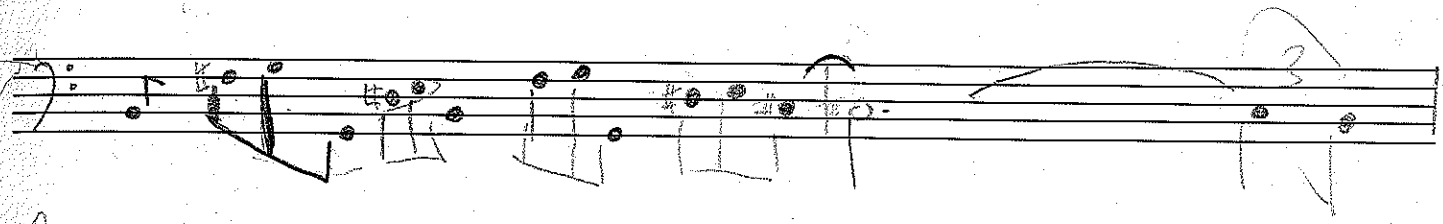
Handwritten musical notation with chords: E/D# (F#), E/D# (F#) C# B, B/E, Dsus4, C.

RAIN

1 66 67 47 root minor 2 major 66 67 47

3

92



mm

